

# R&D KIT and R&D KIT PRO



| What's included ?

| Open source navigation

| Full integration

| Ready to use





A fully integrated solution for robotics research and development with our Scout Mini platform. Equipped with a full suite of sensors to support indoor SLAM, Navigation and Vision based applications. A powerful NVIDIA Jetson Nano computer comes pre-installed with Linux and ROS Ubuntu 18.4. Scout Mini Development kit accelerates robotics applications and research by eliminating the need to design, manufacture and Integrate a complex robotic system.



Research and Development kit

Nvidia Jetson Nano

EAI G4

SCOUT MINI



Research and Development kit - Pro

Velodyne VLP 16

Nvidia Xavier

## » What's included?



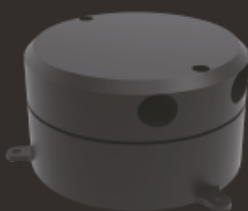
### Nvidia Jetson Nano

- ARM A57 @ 1.43 GHz CPU
- 128 Maxwell GPU
- 4GB 64 LPDDR4 25.6GB/s
- HDMI/DP, USB 3.0, USB 2.0 Micro-B



### Nvidia Xavier

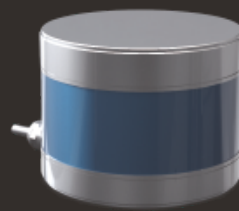
- ARM v8.2 64 CPU
- 512 Tensor Core Volta GPU
- 32 GB 256 LPDDR4x
- 32 GB eMMC 5.1
- HDMI 2.0, USB 3.1, RJ45



### EAI-G4 Lidar (ADD PHOTO)

- Rotate 360-degree scanning distances measurement and 0.26-0.3° angular resolution
- 5-12Hz scanning frequency and
- 9000 times/S high-speed ranging 0.1-16m ranging radius
- magnetic wireless technology and low-loss industrial design

Research and Development kit

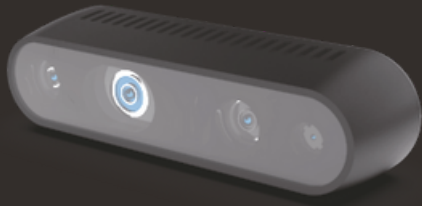


### VLP16 Lidar (ADD PHOTO)

- 360° horizontal scanning and 0.1-0.4° angular resolution
- ±15° Vertical scanning and 2° angular resolution
- 5-20Hz scanning frequency, up to 300,000 point-data/S output and 01-100m ranging radius
- IP67 protection level and ultra-long service life

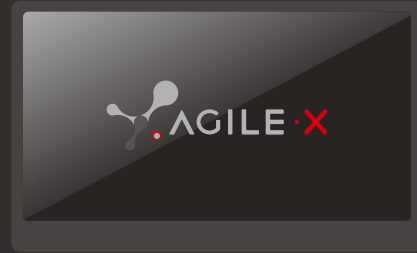
Research and Development kit - Pro

## » Intel Realsense D435 stereo depth camera



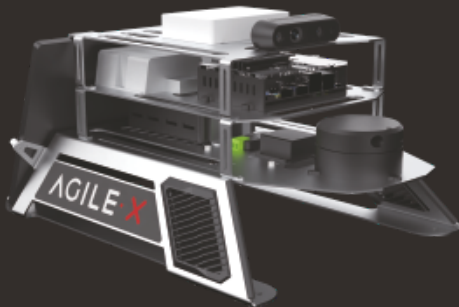
- FOV =  $87^\circ \times 58^\circ$
- Depth output resolution 1280 X 720
- Depth frame rate up to 90 fps
- Ideal ranger .3m to 3m

## » Portable 11.6 inch monitor



- 480g/8mm ultra-thin
- 1920\*1080P
- USB Type-C direct connection

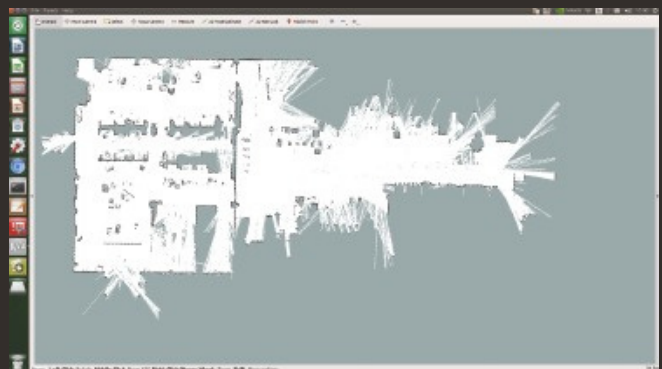
## » Full integration (Hardware / Software / Mounting)



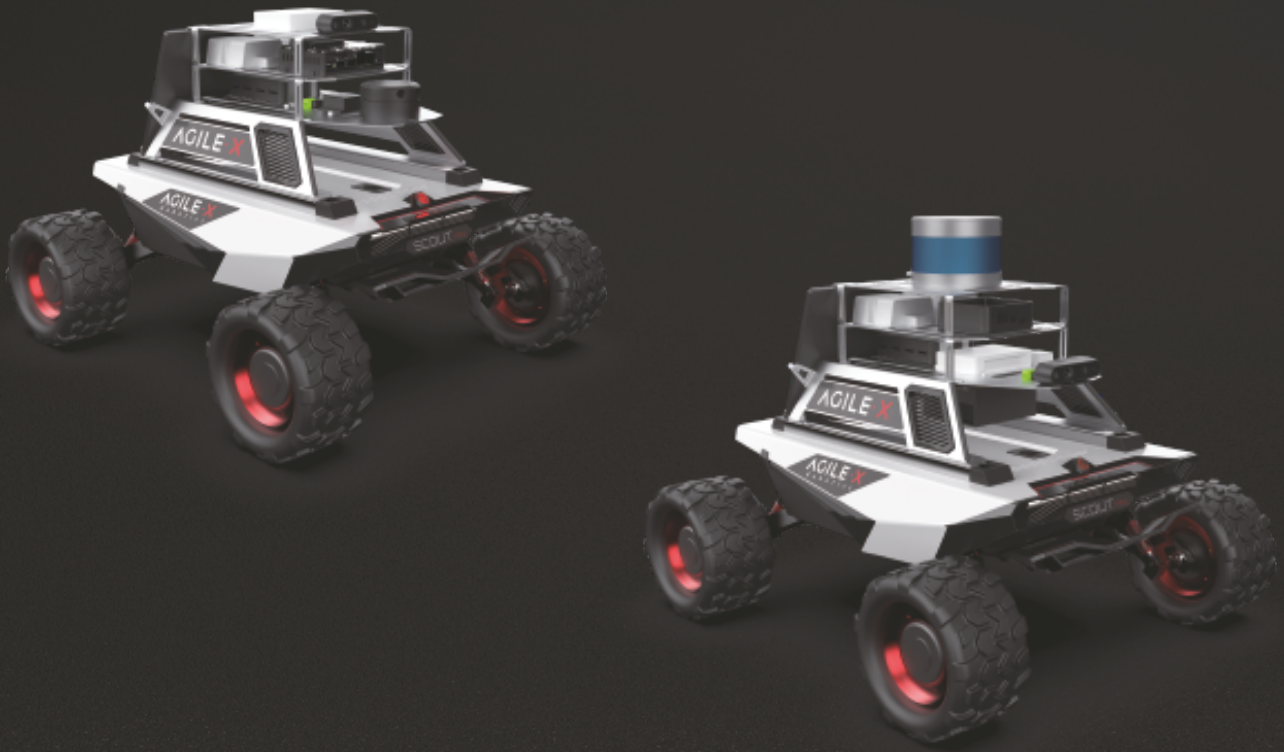
- Pre-installed with Linux and ROS Ubuntu 18.4
- Pre-installed hardware drivers allowing all sensors to be controlled by onboard PC.
- Fully integrated sensor mounting plates. Methodically designed for highest IP rating, and best placement of sensor. Allows for easy access and additional integration of new components.
- Compatible with Scout Mini, Tracer, SCOUT2,0 and BUNKER.

## » Onboard open source SLAM based mapping

- Development tools include viz, Gazebo and Nomachine. Communication (Ros) nodes are provided for mapping and navigation.







# Génération ROBOTS

**Distributeur officiel**

[sales@generationrobots.com](mailto:sales@generationrobots.com)

+33 5 56 39 37 05

[www.generationrobots.com](http://www.generationrobots.com)

