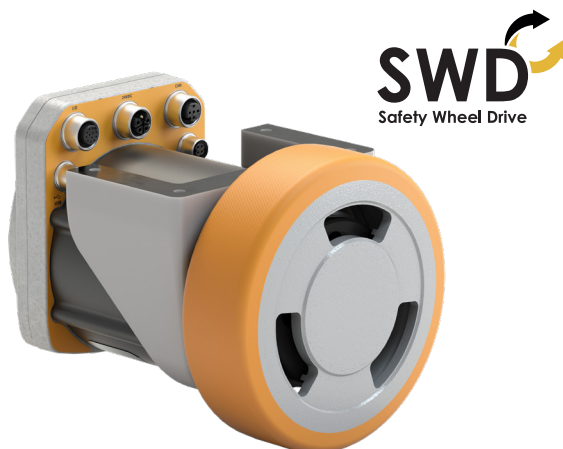


EW2A-125HN14x

Ref. ezSWD125IM.14x/C



- ✓ ez-Wheel® Safety Wheel Drive - SWD® 125
- ✓ safety wheel drive with industrial rubber, medium duty
- ✓ suitable for:
 - mobile platforms
 - industrial robots
 - AGVs and AMRs



Technical characteristics

Diameter	125 mm
Type of tyre	PU 80 sh.A - Flat profile
Speed range (traction)	0 to 3.2 km/h
Peak pushing effort	60 daN Moves 1 500 kg
Nominal performance	27 daN at 2.4 km/h
Maximum vertical load	250 kg
Option(s)	Parking brake

Component specifications

Motor



Technology	BLDC PM
Gearbox	2-stages planetary ratio 14:1
Indicative lifespan*	5 000 h 1 500 000 starts/stops
Nominal speed	100 rpm
Nominal power	185 W (S1)
Peak torque	37 Nm

Safety features



Motor disconnection	STO SIL3/PLe
Motion control	SLS, SDI, SMS, SIL2/PLd
Braking	SBC SIL2/PLd
Encoder	406 ppr SIL2/PLd
Interface	CANopen Safety®

Conditions of use



Temperatures	0 to +40 °C
IP index	IP66 (electronic housing)
Maintenance period*	5 years

The wheel can be used inside or outside, over a wide range of temperatures. The components do not need any inspection or maintenance over the product's whole lifespan.

Weight



Wheel weight	6.5 kg 7.3 kg with brake
--------------	-----------------------------

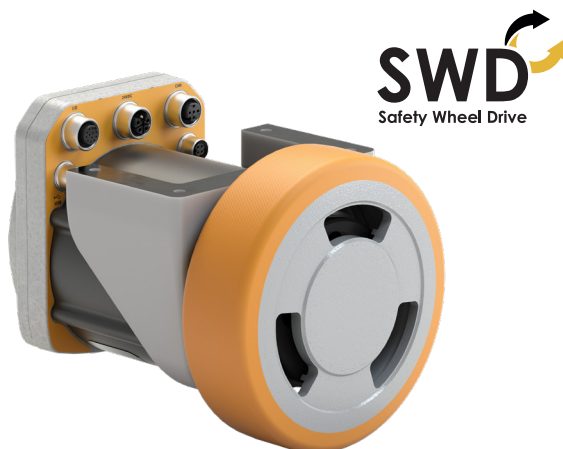
All values are subject to changes without prior notice.

*: Values for reference, based on standard condition testing, may vary with different application cases.

Thanks to the reinforced cast iron housing and wheel hub, the wheel can withstand knocks and severe vibration and enables the wheel to carry some load.

EW2A-125HN04x

Ref. ezSWD125IM.4x/C



- ✓ ez-Wheel® Safety Wheel Drive - SWD® 125
- ✓ safety wheel drive with industrial rubber, medium duty
- ✓ suitable for:
 - logistics robot
 - service robot
 - AGVs / AMRs



Technical characteristics

Diameter	125 mm
Type of tyre	PU 80 sh.A - Flat profile
Speed range (traction)	0 to 11 km/h
Peak pushing effort	20 daN Moves 500 kg
Nominal performance	7,9 daN at 9 km/h
Maximum vertical load	250 kg (static) 200 kg at 6 km/h 150 kg at 9 km/h 100 kg at 11 km/h
Option(s)	Parking brake

Component specifications

Motor



Technology	BLDC PM
Gearbox	1-stage planetary ratio 4:1
Indicative lifespan*	5 000 h 1 500 000 starts/stops
Nominal speed	380 rpm
Nominal power	200 W (S1)
Peak torque	13 Nm

Safety features



Motor disconnection	STO SIL3/PLe
Motion control	SLS, SDI, SMS, SIL2/PLd
Braking	SBC SIL2/PLd
Encoder	109 ppr SIL2/PLd
Interface	CANopen Safety®

Conditions of use



Temperatures	0 to +40 °C
IP index	IP66 (electronic housing)
Maintenance period*	5 years

The wheel can be used inside or outside, over a wide range of temperatures. The components do not need any inspection or maintenance over the product's whole lifespan.

Weight



Wheel weight	6.2 kg 7 kg with brake
--------------	---------------------------

All values are subject to changes without prior notice.

*: Values for reference, based on standard condition testing, may vary with different application cases.

Thanks to the reinforced cast iron housing and wheel hub, the wheel can withstand knocks and severe vibration and enables the wheel to carry some load.

Generation ROBOTS

Brand of **NGX** ROBOTICS



+33 (0)5 56 39 37 05



contact@generationrobots.com



1 rue Pierre-Georges Latécoère 33700 Mérignac, France

www.generationrobots.com

