



SwiftBot

All-powerful Delivery Robot

Redefining human-robot relationship



Génération
ROBOTS

Content.

About PUDU SwiftBot

01

Product Overview

02

Key Features

03

Product Values

04

About Pudu

SwiftBot

Powered by industry-leading collision sensing technology and Pudu-developed advanced algorithm, SwiftBot aims at being the most intelligent and secure commercial delivery robot. SwiftBot can recognize passer-by and initiatively give way to pedestrian in a timely manner. Even in a highly dynamic and complex environment, SwiftBot can conduct and complete its tasks with ease, while at the same time surprises you with its multifunctionality, high-reliability and fashionable technology.





Dimension	Machine: 488*593*1288mm Carton size: 675x595x1360mm Wooden case size: 703x621x1496mm
Machine Weight	59kg/49kg
Maximum Loads	35kg
Trays	Size: 433*502mm Default 3*trays
Battery Life	10H~24H
Charging Time	4.5H
Path Clearance	Min 80cm
Cruise Speed	0.5-1.2m/s
Climbing Angle	5°
Door-opening Method	Automatic
Positioning Method	Marker, Laser and Fusion
Dispatching	Max 20 Robots
Charging	Wire or Automatic
Obstacle Detection Angle	Front 260° Back 180°



Content.

About PUDU SwiftBot

01

Product Overview

02

Key Features

03

Product Values

04

About Pudu

Omnidirectional Perception Capability

Comprehensive utilization of sensing technology to secure safe deliveries

- 3 * RGBD camera + 2*RGB camera + 2*Lidar
- 260° extra-wide front detection scope and 180 ° at the back
- Accurately detect obstacles and stop within 1.5s seconds in case of obstacles
- Effective human detection distance over 3 meters in front and 1.5 meters at back



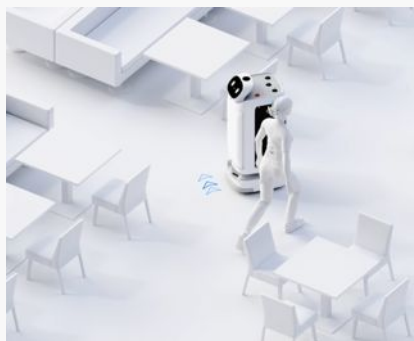
Initiative Make-way for Pedestrian

Improving efficiency and performance in rush hour

- SwiftBot is designed to work in busy and dynamic environment with courtesy and efficiency.
- Supported by rear sensors, accurate human detection and environmental perception algorithm, SwiftBot is capable of giving way to people initiatively. When human is detected, it will decide to move sideways or backwards, then continue its job.
- It can:
 - Lateral make-way for facing pedestrian
 - Lateral make-way for parallel pedestrian
 - Backward make-way for facing pedestrian
 - Safe-following of parallel pedestrian



Accurate recognition of pedestrians in dynamic environment, proactive route anticipation of passers-by and initiative avoidance in advance



Lateral make-way for facing pedestrian

- The passage is wide enough for SwiftBot and pedestrians to pass at the same time
- SwiftBot takes the initiative to pass on the other side



Backward make-way for facing pedestrian

- The width of passage is not enough for SwiftBot and pedestrians to pass at the same time
- SwiftBot initiatively moves backward and makes ways if there is a suitable stopping point behind



Lateral make-way for parallel pedestrian

- The passage is wide enough for SwiftBot and pedestrians to pass at the same time
- SwiftBot actively leans to the other side



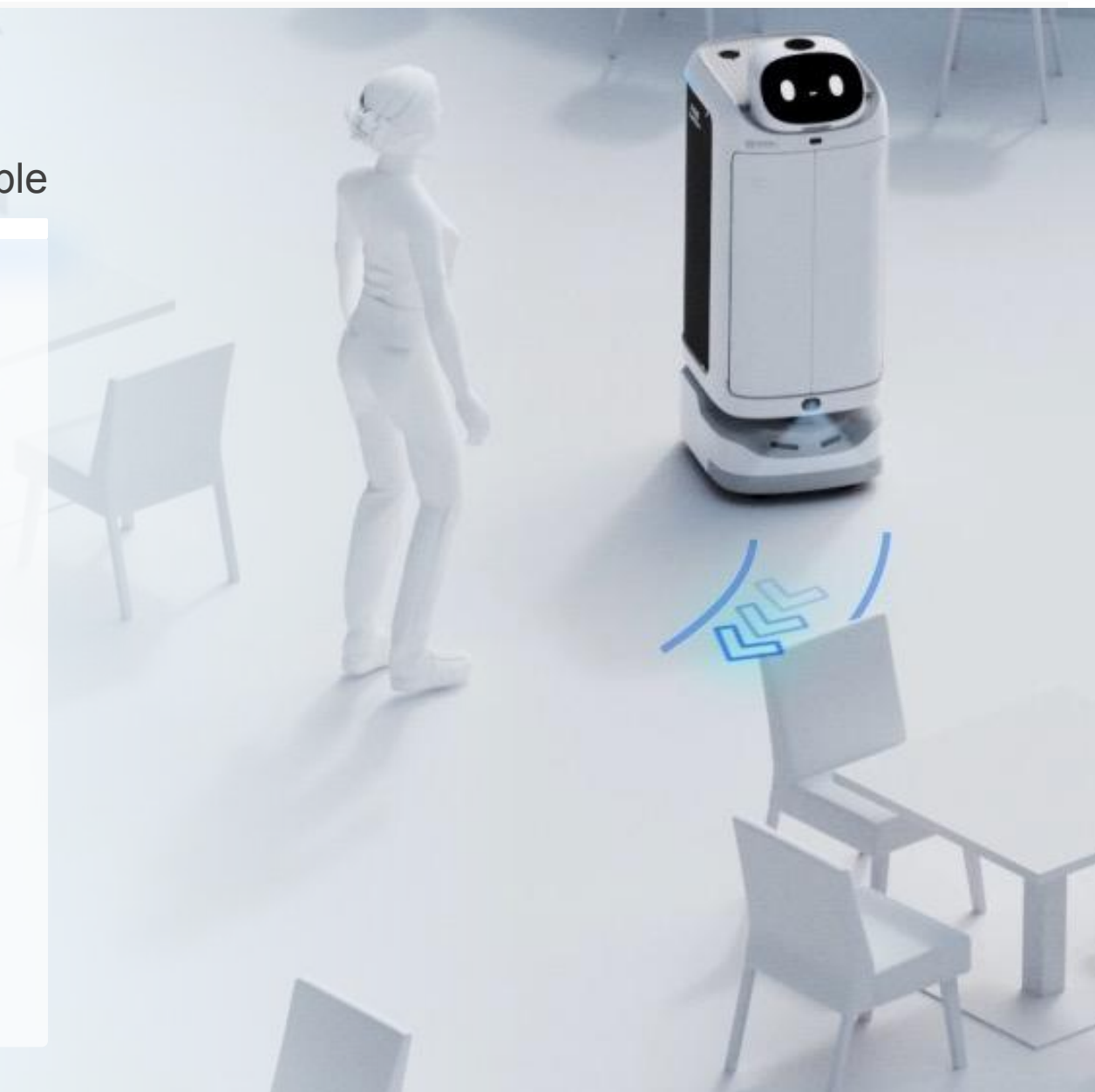
Safe-following of parallel pedestrian

- The width of passage is not enough for Swift and pedestrians to pass at the same time
- SwiftBot slows down and keeps an appropriate distance with the pedestrian ahead

Realtime Visualized Status

Every step of SwiftBot is visible and understandable

SwiftBot can laser-project its path on the ground as a real-time caution for the pedestrians. The route of SwiftBot in coming 1-2 seconds can be displayed on the ground. The faster it moves, the longer route is shown. With the visualized marching route, SwiftBot's intention can be fully aware of and it can cooperate better with people.



Innovative Projection Interaction

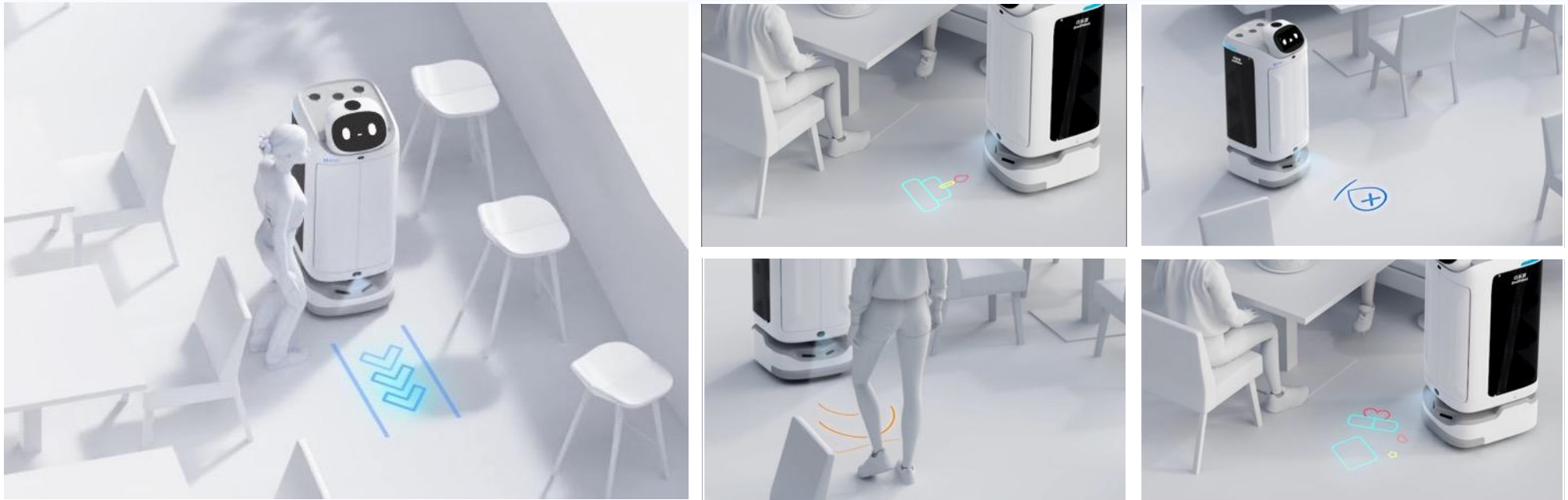
Enhancing Experiences and Efficiency

The projection interaction of SwiftBot fulfills below functions:

- One step door control
- Realtime path projection
- Machine status indicators
- Pattern interaction in special modes



Innovative Projection Interaction



With laser projection, SwiftBot can create a more intimate ambience and provide an intelligent experience for the customers.

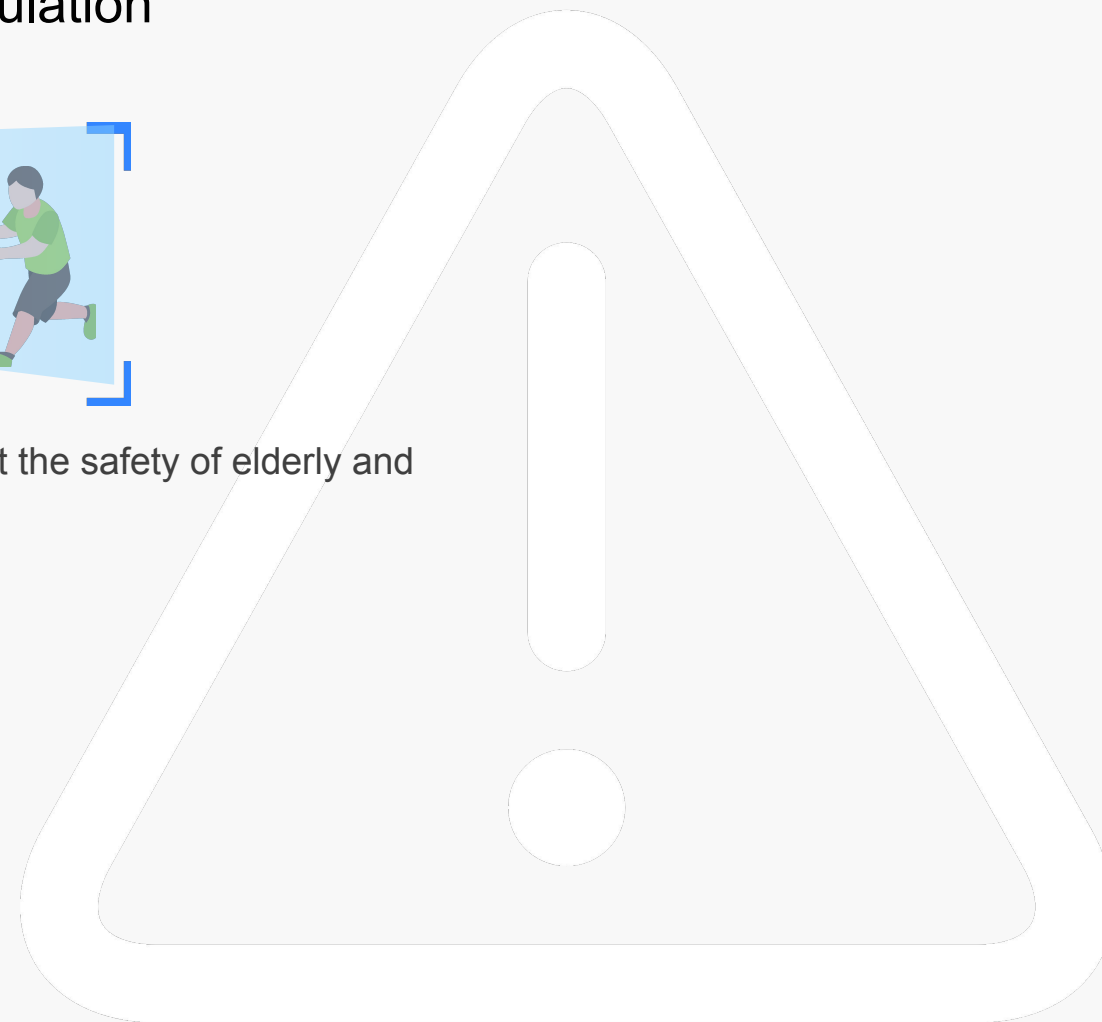
Advanced Protection Mechanism for Special Population



SwiftBot is designed with the advanced protection algorithms to project the safety of elderly and children in the same environment.

SwiftBot will

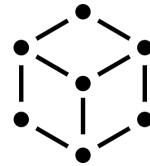
- Proactively detect if any special groups people around
- In advance slow down after recognizing the elderly and children



Multiple Serving Modes



Food Delivery Mode



Delivery Mode



Cruise Mode



Guiding Mode



Birthday Mode



Interaction Mode

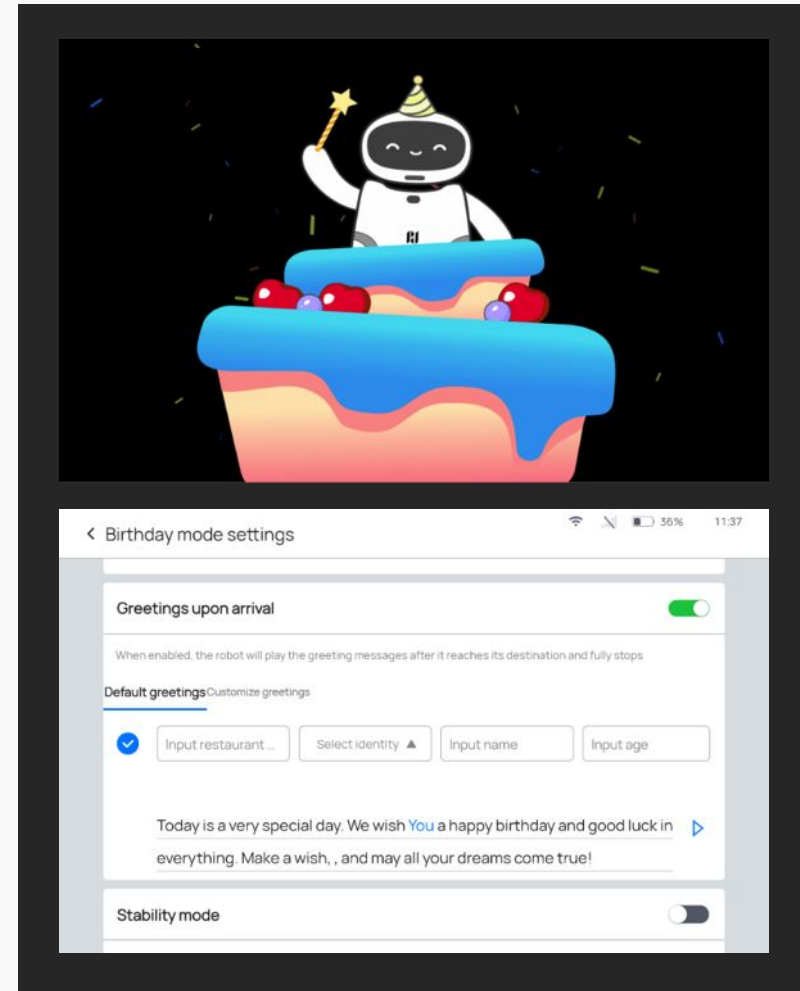
Intelligent Guiding

SwiftBot supports voice control to activate the guiding mode and powered by advanced autonomous path-planning algorithm, it will select the optimal path and lead the customers to their table.



Birthday Mode

SwiftBot offers a wide range of functions in Birthday Mode such as birthday notes customization, music customization, laser projection interaction etc, giving customers a better experience and happy ambience.



Mission at-1-call



Pudu Watch



Pudu Pager

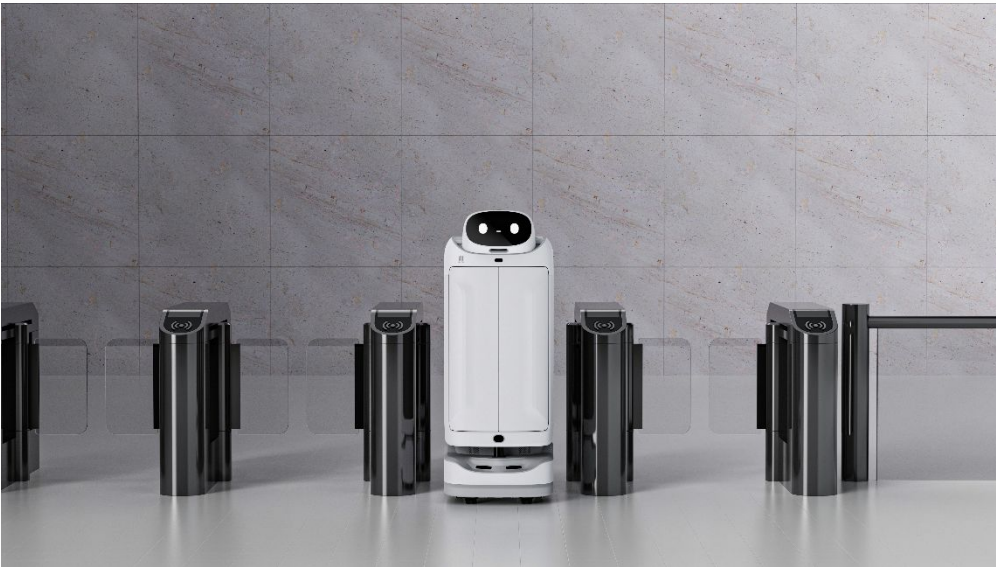


Pudu Link

SwiftBot supports Pudu Pager and Pudu Link calling function. Simply with one click, SwiftBot can receive and conduct the missions, making it incredibly convenient for the user to assign and manage tasks.

Automated Pass-through

Safely and automatically pass through E-gates or Electric glass doors



Autonomous Elevator-riding

By adopting the PUDU Smart IOT platform, SwiftBot is capable of automatically calling and entering the elevator, then selecting the target floor and leaving when it arrives. The whole system completes the autonomous elevator-taking process by simulating human behavior without human intervention.



Automatic Charging

SwiftBot automatically provides a voice alert and UI notification when the battery is low.

Without manual intervention, SwiftBot can go to the charging pile to refuel itself when the battery level is lower than the set threshold.



Content.

About PUDU SwiftBot

01

Product Overview

02

Key Features

03

Product Values

04

About Pudu



Efficient

- Omni-directional Perception
- Intelligent Waiting
- Multi-table Delivery
- Initiative Make-way
- Autonomous Path-planning
- Mission at-1-call
- Automatic Charging



Safe and Secure

- Automatic Electric Door
- Stabilized Delivery Mode
- Special Group Detection Algorithm
- Real-time Path Projection
- Initiative Make-way for Pedestrian



Great Applicability

- Multiple Serving Modes
- Function-extendable
- 3rd Party Integration
- Pudu Cloud Platform

5-S Delivery Expert

50%

Swift

Reduce 50% human-robot road congestion and increase 30% machine running speed in restaurant environment

20%

Stable

Enhance 20% delivery stability powered by hybrid technology, combining Auto-level adaptive variable suspension and stabilization algorithm



Safe

Human detection technology of securing safety for special group such as elders and children



Smart

Multimodal interaction provides more intelligent and better experience for customers

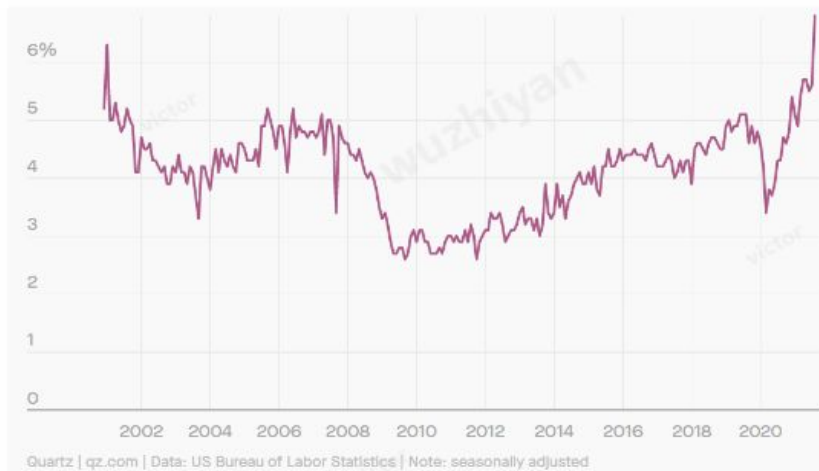


Sociable

Being courteous and friendly, SwiftBot redefines the relationship between people & robots

Enhance Work Experience and Staff Satisfaction

Mitigate the recruitment pressure



In 2021, the shortage rate of the global food services is 14.39% meanwhile the quit rate is up to 7% .

The pandemic has been hugely devastating to the labor market and fundamentally altered the industries and locations where would-be employees want to work. Employers are struggling in looking for and retaining qualified staffs.

Deploying robots to replace the 4-D jobs (Dull, Duplicate, Dirty and Dangerous) is trendy and will become ubiquitous in future. With the help of robots, employees may focus more on the high-value work and have a better work environment, which results in better work experience and satisfaction.

Contactless Delivery, Safety Means Everything

SwiftBot supports pager function, traces the target following the voice directions, and receives remote operation commands. In different use scenarios, SwiftBot can receive demands from the pagers and collects the dishes or items automatically, requiring no manual operation or intervention, reducing contagion risk between people and boosting work efficiency.



Unimpeded In-building Delivery

With the ability of automatic passage in the building, SwiftBot can shuttle in elevators, e-gates and electric door freely. The lockable, large capacity cabin enables safe and efficient item delivery between floors.



Greater Brand Exposure

By creating your one-of-a-kind SwiftBot

Pudu offers customized appearance and voice messages services to make your robots unique and eye-catching by combining brand logo or culture elements.



Customized Voice

Multiple Scenarios Coverage



Restaurant



Hospital



Hotel



Office



School



Nursing Center



Entertainment



Shopping Mall

With the fusion of positioning, navigating and sensing technology, SwiftBot can be widely used in different commercial scenarios, such as restaurants, café, hospitals, hotels, office buildings etc.

Content.

About PUDU SwiftBot

01

Product Overview

02

Product Advantages

03

Product Values

04

About Pudu



Pudu Robotics

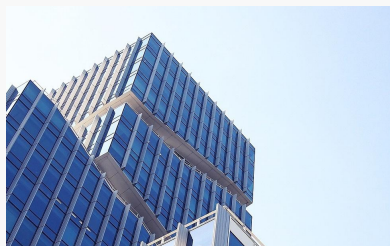
Shenzhen-based and founded in 2016, Pudu Robotics is a world-leading tech-focused enterprise dedicated to the design, R&D, production and sales of commercial service robots on a mission to use robots to improve the efficiency of human production and living.

Since its inception, Pudu Robotics has heavily invested in R&D, obtained multiple awards such as Red Dot and applied hundreds of core patents to lead the development of the robotics category and provide high technology products that would appeal to targeted markets. Pudu Robotics has been rapidly growing in recent years to become a “leader” in the global markets with coverage of over 60 countries and regions worldwide. The robots are widely applied in restaurants, hospitals, schools, office buildings, government halls, subway stations, waiting rooms, etc.



Milestone

2016



Jan.: Shenzhen-based

Founded in 2016

Completed angel round financing

2017



Mar.: Released First Delivery Product – PuduBot

Jul.: Won Red Dot Award – The Best of the Best

2018



Jun.: Series A Financing: Raised \$8 Million

Nov.: Approved as a National High-tech Corporate



2019



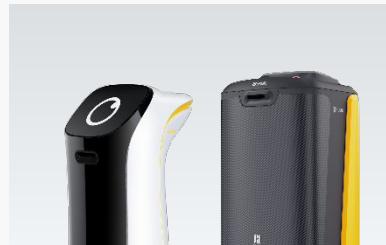
Jun.: Global Strategic Cooperation – Haidilao Hotpot
Sept.: Strategic Cooperation – Xiabu Xiabu
Dec.: Released Multi-featured Products – BellaBot & HolaBot

2020



Jan.: Awarded CES Technology Innovation Award
Feb.: Contributed to Hundreds of Hospitals during COVID-19 Outbreak
Jul.: Series B Financing: Raised over \$15 Million by Meituan
Aug.: Series B+ Financing: Raised \$15 Million by Sequoia China Investment Management LLP
Dec.: Launched Disinfection Robot – Puctor 2

2021



Mar.: Sub-branch R&D Center Set-up
Mar.: Launched New Products - KettyBot & FlashBot
May: Series C1 Financing: Raised \$78 Million by Tencent, Meituan and Sequoia China Investment Management LLP
Sept.: Strategic Cooperation - Panasonic
Sept.: Series C2 Financing: Raised \$77 Million by Meituan, Greater Bay Area Homeland Investments Limited, Shenzhen Investment Holdings Co., Ltd., Sequoia China Investment Management LLP
Oct.: Won G-mark – Good Design Award

2022



May: Released New Delivery Product - SwiftBot
Jun.: Released New Cleaning Product - PUDU CC1
Jul.: Released New Delivery Product - PuduBot 2
Dec.: 56,000+ units have been sold worldwide



Culture

Mission

Use robots to improve the efficiency of human production and living

Vision

To become the world's strongest commercial service robot company



BE INVENTIVE



BE CUSTOMER
CENTRIC



THINKING IN THE LIGHT OF
FIRST PRINCIPLES



BE
ENTERPRISING &
ACCOUNTABLE



PURSUING FOR
THE ULTIMATE



MOVING FAST



BE
OPEN-UP



EMBRACING
CHANGE

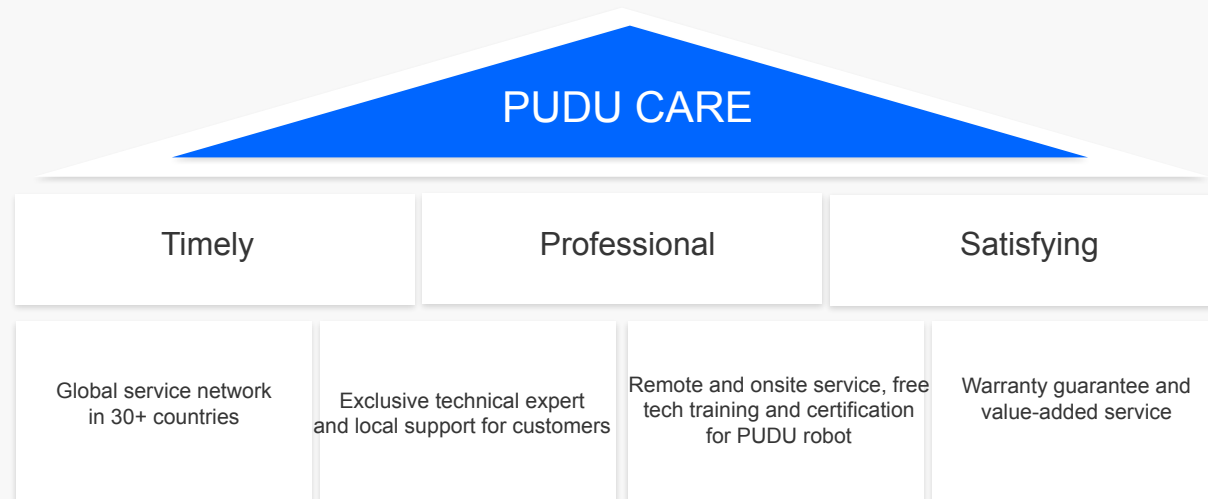


Operation Advantage

Offline Service:

- 1 Year Free Warranty
- 7 × 24 Hours Service
- Local Service & Support

Pudu Robotics has a thorough after-sales support system and humanized after-sales policy as well, whenever it is needed, we are going all out to offer service and reach your satisfaction.





Certificate & Patent

All of existing products have passed the multi-certification that match the targeting markets.



Pudu Robotics has applied for about 1300* core patents, of which invention patents are over 60%, involving positioning, navigation, motion control, human-computer interaction, robotics arm, servo motor, computer vision, cloud platform and other technical fields.

* Relevant statistics as of December 2022



Honor

Pudu Robotics has been recognized by organizations and institutions in various industries.



GÉNÉRATION ROBOTS

Our added value

With 16 years of experience in robotics, Génération Robots **distributes robots and robotic and electronic components.**

With operations in **France** and **Germany**, it is now one of the major players in the distribution and consultancy of service robotics in Europe.

16+ years

Of experience
and expertise

120

Countries
supplied

800

Referenced
products

6M

Turnover in 2023



DO YOU HAVE A PROJECT?



David DENIS

Sales Manager



david.denis@generationrobots.com



+33 5 56 39 37 05

+33 6 19 42 09 39



Request a quote



Génération Robots

1 Rue Pierre Georges Latécoère
33700 Mérignac France

