

# RANGER **MINI2.0**

- 4-Wheel Independent Steering
- 4-Wheel Independent Suspension
- Multiple Moving Modes
- IP54 Dust-proof and Waterproof
- Hot Swap Modular Battery System
- Secondary Development Supported



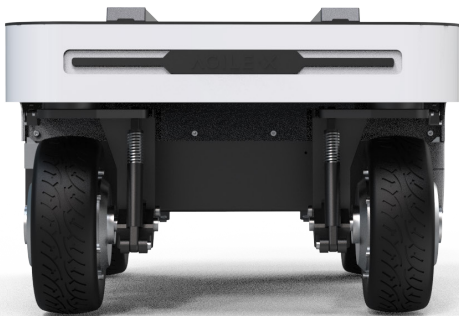
## » Motion Control of 4WD Omnidirectional robot

The RANGER mini 2.0 is an upgraded version of the original RANGER mini. It provides an innovative design for a mobile robot that would operate within the context of an industrial application. It has flexible steering, strong maneuverability, a 0 turning radius, and can achieve 360° steering in situ by using 4\*100W harmonic drives and 4\*350W drive motor control systems.

- ❑ Four steering modes: (a) spinning (b) traverse (c) crab steering (d) Ackermann steering
- ❑ Waterproof and dustproof to IP54



## » Independent suspensions offer more flexibility



RANGER mini 2.0 adopts a four-wheel independent suspension system with a load capacity of 80 kg, which can effectively improve the robot's maneuverability, pass-ability, and safety. It has the ability to adapt to difficult fields of various industry scenes, with an over 15° slope and 80 mm over ridge.

- ❑ The Ranger mini 2.0 has 107 mm of ground clearance and strong obstacle-crossing capabilities.
- ❑ 15° full-load climb and 80 kg load-bearing capacity.
- ❑ Independent four-wheel suspension enable the individual wheels to respond to varying road conditions.

## » Module development, fast charging and battery swapping

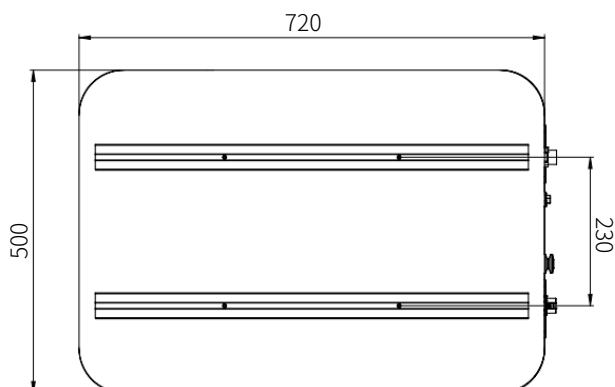
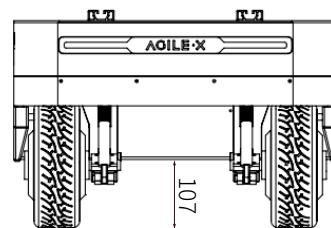
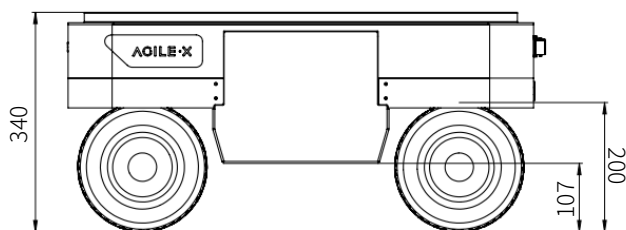
RANGER mini 2.0 has a small size, high compatibility, long battery life, and is simple to maintain. It is outfitted with a variety of software and hardware interfaces and supports a wide range of top component applications. It also supports fast charging and hot swapping functions to ensure that the robot always has power.

- ❑ The battery life can last up to 7 hours when fully loaded.
- ❑ An hour of charging can cover 30 kilometers.
- ❑ Replacing the hot-swap batteries is simple and practical.



## » Specifications

Model	RANGER mini 2.0	Drive Type	In-wheel motor
Size	738mm×500mm×338mm	Cooling Type	Air-cooled
Wheelbase	494mm	Operating Temperature	-10~40°
Tread	364mm	Charger	54.75V20A
Overall Mass	63KG	Charging Time	1.5H
Maximum Speed	6km/h	Voltage	48V
Ground Clearance	107mm	Power Battery Type	Lithium iron phosphate
Minimum Turning Radius	0mm	Battery	48V24AH
	Spin mode	External Power Supply	48V
Wheel Hub Radius	100mm	Motor	4 x 100 W steering and 4 x 350 W driving
Brake Type	Electronic brake	Communication Interface	Standard CAN
Rated Load In Movement	80KG	Suspension Type	Swing arm suspension
Maximum Slope	15°(with load)	Protection Level	IP54
Steering Type	Four wheel independent	Maximum Battery Life	7~8h
Maximum Mileage	35KM		





# Génération ROBOTS

**Official distributor**

[service@generationrobots.com](mailto:service@generationrobots.com)

+49 30 30 01 14 533

[www.generationrobots.com](http://www.generationrobots.com)

