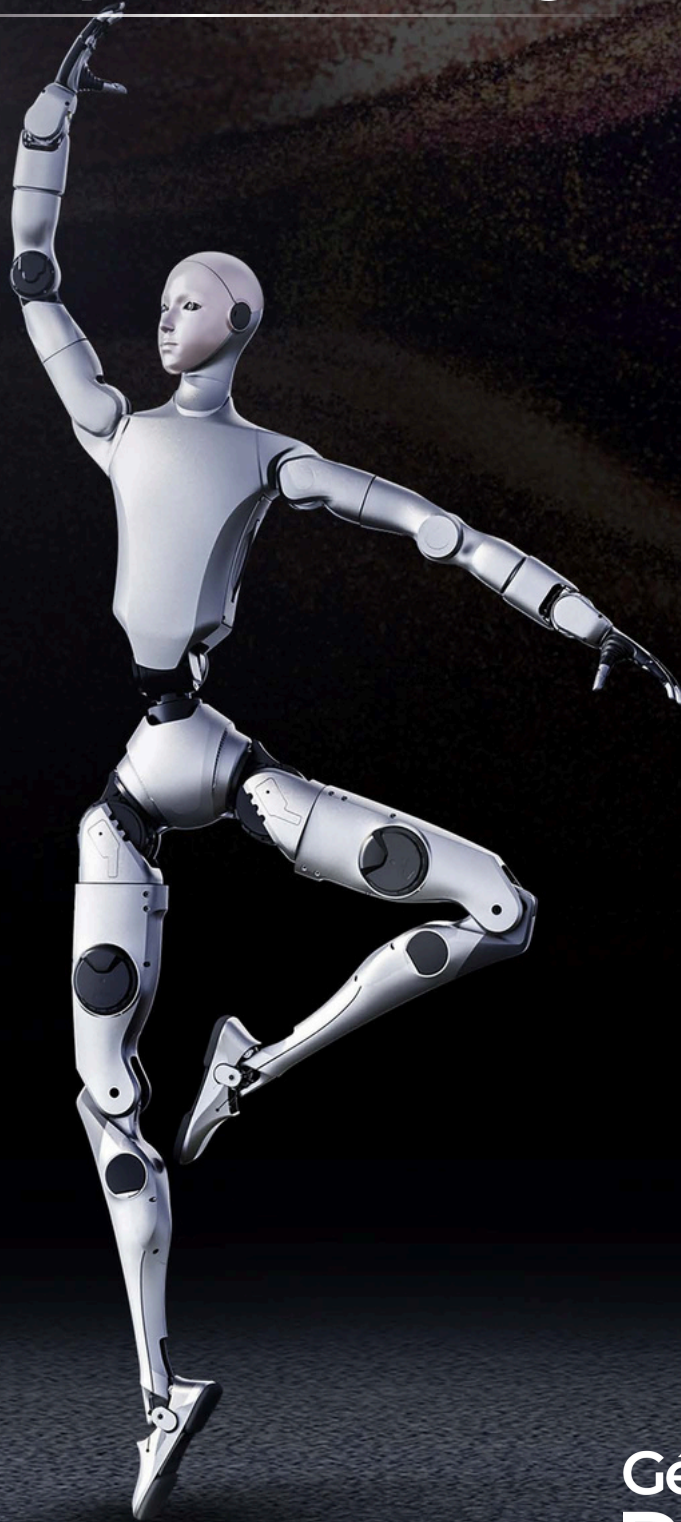


UNITREE H2

Destiny Awakening



Génération
ROBOTS

Unitree H2 Parameter

Model		H2	H2 EDU
Mechanical Dimensions	Height, Width and Thickness (Stand)	1820×456×218mm	1820×456×218mm
	Weight (With Battery)	About 70Kg	About 70Kg
	Degree of Freedom (Total Joints)	31	31
	Single Leg Degrees of Freedom	6	6
	Single Arm Degrees of Freedom	7	7
	Waist Degrees of Freedom	3	3
	Head Degrees of Freedom	2	2
	Dexterous Hand	/	Dexterous Hand (Multiple Model Options)
	Bionic Head with Facial Features	YES	YES
	Joint output bearing	Industrial grade crossed roller bearings (high precision, high load capacity)	Industrial grade crossed roller bearings (high precision, high load capacity)
	Joint motor	Low inertia high-speed internal rotor PMSM(permanent magnet synchronous motor,better response speed and heat dissipation)	Low inertia high-speed internal rotor PMSM(permanent magnet synchronous motor,better response speed and heat dissipation)
	Maximum Torque of Arm Joint [1]	120N.M	120N.M
	Maximum Torque of Leg Joint [1]	360N.M	360N.M
	Arm Maximum Payload [1]	Peak: ~15 kg; Rated: ~7 kg	Peak: ~15 kg; Rated: ~7 kg
	Calf + Thigh Length	1045mm	1045mm
	Forearm + Upper Arm Length	690mm	690mm
Materials Used in Construction	Aircraft-Grade Aluminum + Titanium Alloy + High-Strength Engineering Plastics	Aircraft-Grade Aluminum + Titanium Alloy + High-Strength Engineering Plastics	
Electrical Characteristics	Cooling System	Local air cooling	Local air cooling
	Power Supply	Premium Lithium Battery with Low Internal Resistance	Premium Lithium Battery with Low Internal Resistance
	Battery Capacity	15Ah(0.972KWh)	15Ah(0.972KWh)
	Battery Voltage	Maximum Voltage: 75.6 V	Maximum Voltage: 75.6 V
	Basic Computing Power	PC1: Intel Core i5 (Platform Capabilities)	PC1: Intel Core i5 (Platform Capabilities) PC2: Intel Core i7 (Custom Development)
	Sensing Sensor	Humanoid Binocular Camera with Wide Field of View	Humanoid Binocular Camera with Wide Field of View
	Voice Interaction	Array Microphone and High-Power Speaker for Voice Interaction	Array Microphone and High-Power Speaker for Voice Interaction
	WiFi 6 , Bluetooth 5.2	YES	YES
Accessories	High-Power Computing Module	/	Compute Module Up to Jetson AGX Thor (2070 TOPS)
	Smart Battery (Quick Release)	YES	YES
	Charger	YES	YES
	Manual Controller	YES	YES
Other	Battery Life	About 3h	About 3h
	Upgraded Intelligent OTA	YES	YES
	Secondary Development [2]	/	YES
	Warranty Period [3]	8 Months	12 Months

[1] The above parameters may vary in different scenarios and configurations, please subject to actual situation.

[2] For more information, please read the secondary development manual.

[3] For more detailed warranty terms, please read the product warranty brochure.

[4] The humanoid robot has a complex structure and extremely powerful power. Users are asked to keep a sufficient safe distance between the humanoid robot and people. Please use with caution.

[5] If any change in the appearance of the product, please refer to the actual product.

[6] Some sample functions on this page are still being developed and tested, and will be opened to users in the future.

[7] Currently, the global humanoid robot industry is in the early stages of exploration. Individual users are strongly advised to thoroughly understand the limitations of humanoid robots before making a purchase.

[8] This product is a civilian robot. We kindly request that all users refrain from making any dangerous modifications or using the robot in a hazardous manner.

[9] Please visit Unitree Robotics Website for more related terms and policies, and comply with local laws and regulations.

Generation ROBOTS

Brand of **NGX** ROBOTICS



+33 (0)5 56 39 37 05



contact@generationrobots.com



1 rue Pierre-Georges Latécoère 33700 Mérignac, France

www.generationrobots.com

